

Next Quote:



[Symbol Lookup](#)

powered by
Stockgroup

ENERVEST DIVERSIFIED INC - EIT.UN (TSX) \$7.16 ▼ -\$0.09 -1.24%

[PRINT THIS](#)

[EMAIL THIS](#)

[Overview](#)

[Charts](#)

[News Releases](#)

[Company Profile](#)

[Financials](#)

Quote

Last Traded: * **Close - 6/6/06**
 Last \$7.16
 Change ▼ -\$0.09
 % Change -1.24%
 Open \$7.23
 Bid \$7.22
 Bid Size 1,500
 Ask \$7.22
 Ask Size 1,600
 Day High \$7.24
 Day Low \$7.11
 52 Week High \$8.95
 52 Week Low \$6.74
 Volume 437,463
 Prev. Close \$7.25

Price History

Date Range:
[Intraday](#) 3
[5 Day](#) [Month](#)
[15 Day](#) [1 Year](#)
[1 Month](#) [2 Year](#)
[3 Year](#)
[Compare vs TSX](#)
[Compare vs TSX](#)
[Trust Units](#)
[Industry](#)
[History](#)



>> [More Charting](#)
 >> [View History](#)
 >> [Download](#)

Tick Type ▼ **DOWN**
 Last Trade Shr. 2,000
 Signal StockScore **40**
 Sent. StockScore **39**
 Industry: Closed-End Fund - Equity

News Releases

CORRECTION FROM SOURCE: EnerVest Diversified Income Trust Announces May 2006 Distribution
 5/18/2006 3:19 PM - CCNMatthews
[EnerVest Diversified Income Trust Announces April 2006 Distribution](#)
 5/18/2006 9:30 AM - CCNMatthews
[EnerVest Diversified Income Trust Announces April 2006 Distribution](#)
 4/19/2006 5:09 PM - CCNMatthews
[EnerVest Diversified Income Trust Announces Taxation of Distributions Declared in 2005](#)
 3/24/2006 1:56 PM - CCNMatthews
[Enervest Diversified Income Trust Announces March 2006 Distribution](#)
 3/20/2006 9:30 AM - CCNMatthews

Add EIT.UN To :
[>> My Portfolio](#)
[>> My Watchlist](#)

My Last 5 Quotes

[ERF.UN](#) \$62.50 UNCH
[EIT.UN](#) \$7.16 UNCH
[DHF.UN](#) \$19.10 UNCH
[NCT.U](#) \$2.40 UNCH
[PEY.UN](#) \$24.75 UNCH

Market Indexes

[TSX](#) 11666.14 EVEN
[TSX-V](#) 2757.17 EVEN
[NYSE](#) 8100.71 EVEN
[NASDAQ](#) 2162.78 EVEN
[AMEX](#) 1924.49 EVEN

Watchlist Edit

[EIT.UN](#) \$7.16 EVEN

[>> More EIT.UN News Releases](#)

Company Profile

Company is a closed end investment trust.

[>> More EIT.UN Profile Information](#)

ENERVEST DIVERSIFIED INC

700 9th Avenue SW

Suite 2540

Calgary, AB CA

T2P 3V4

Website: <http://www.enervest.com>

Email: info@enervest.com

Officers: Kevin W. Wolfe, CEO

[BACK](#) | [CLOSE](#) | [TOP](#)

© 2006 Stockgroup [Terms & Conditions](#). [Privacy Policy](#).

Intraday data provided by [Comstock](#), a division of Interactive Data Corp. and subject to [terms of use](#).

[TERMS OF USE](#) | [PRIVACY](#) | [GLOSSARY](#) | [HELP](#)

Copyright © iTrustResearch. All Rights Reserved.

Next Chart: [Symbol Lookup](#)



ENERVEST DIVERSIFIED INC - EIT.UN (TSX) \$7.16 ▼ -\$0.09 -1.24%

[PRINT THIS](#)

[EMAIL THIS](#)

[Overview](#)

Charts

[News Releases](#)

[Company Profile](#)

[Financials](#)

Basic

Advanced

Next Chart:

Date Range:

3 Month

True:

TSX TSX Trust Units

Compare vs Other Stocks:

(eg: GE,ORCL,MSFT)

Moving Averages: (in days)

First: Second:

1st Average Color:

2nd Average Color:

View Options:

Show Splits Show Volume

Chart Type:

Line Candles

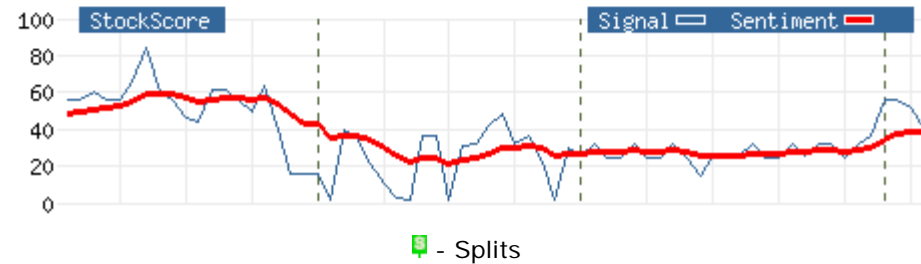
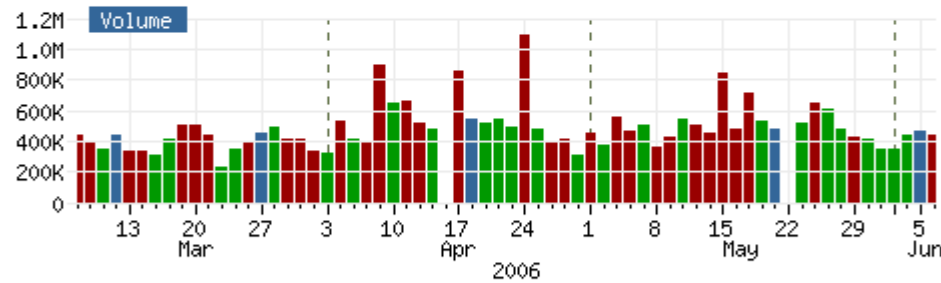
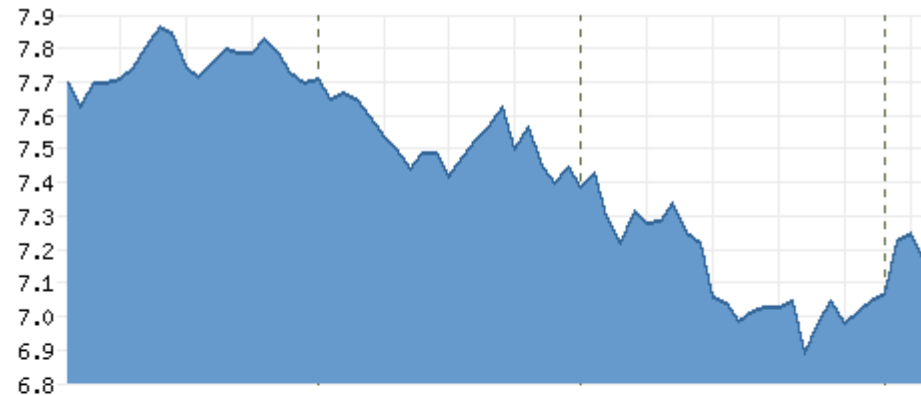
Shaded Area Open/Close

Additional Charts:

RSI Volume Price Trend

MACD Volatility

Stochastics Stockscore



EIT.UN 5 Day

TSX Trust Units 1 Month

EIT.UN vs TSX Trust Units 1 Month

Create Chart

>> [View History](#)
>> [Download History](#)

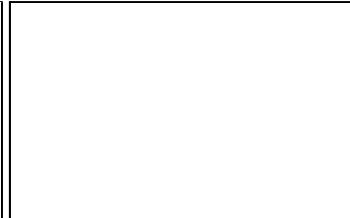
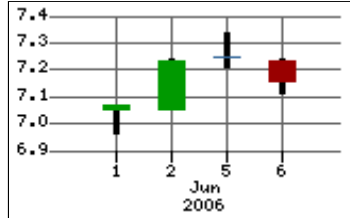
Research Options :

Add EIT.UN To :

>> [My Portfolio](#)
>> [My Watchlist](#)

Watchlist Edit

[EIT.UN](#) \$7.16 EVEN



Stock History: ENERVEST DIVERSIFIED INC - EIT.UN (TSX)

Date	Open	Day High	Day Low	Close	Volume
6/6/2006	7.23	7.24	7.11	7.16	437,463
6/5/2006	7.25	7.34	7.21	7.25	459,392
6/2/2006	7.05	7.24	7.05	7.23	437,391
6/1/2006	7.05	7.07	6.96	7.07	347,170
5/31/2006	7.00	7.05	6.96	7.05	349,425
5/30/2006	6.99	7.03	6.97	7.02	409,830
5/29/2006	7.03	7.04	6.95	6.98	423,909
5/26/2006	7.03	7.07	6.99	7.05	505,635
5/25/2006	6.96	7.05	6.91	6.96	668,120
5/24/2006	7.05	7.07	6.81	6.89	640,488

>> [View More History](#)

>> [Download History](#)

[BACK](#) | [CLOSE](#) | [TOP](#)

© 2006 Stockgroup Terms & Conditions. [Privacy Policy](#).

Intraday data provided by [Comstock](#), a division of Interactive Data Corp. and subject to [terms of use](#).

[TERMS OF USE](#) | [PRIVACY](#) | [GLOSSARY](#) | [HELP](#)

Copyright © iTrustResearch. All Rights Reserved.

Next News Releases:  [Symbol Lookup](#)



ENERVEST DIVERSIFIED INC - EIT.UN (TSX) \$7.16 ▼ -\$0.09 -1.24%

 [PRINT THIS](#)

 [EMAIL THIS](#)

[Overview](#)

[Charts](#)

[News Releases](#)

[Company Profile](#)

[Financials](#)

Research Options :

Add EIT.UN To :

[>> My Portfolio](#)

[>> My Watchlist](#)

Watchlist

Edit

EIT.UN \$7.16 EVEN

News Releases

[CORRECTION FROM SOURCE: EnerVest Diversified Income Trust Announces May 2006 Distribution](#)

5/18/2006 3:19 PM - CCNMatthews

[EnerVest Diversified Income Trust Announces April 2006 Distribution](#)

5/18/2006 3:19 PM - CCNMatthews

[EnerVest Diversified Income Trust Announces April 2006 Distribution](#)

5/18/2006 3:19 PM - CCNMatthews

[EnerVest Diversified Income Trust Announces Taxation of Distributions Declared in 2005](#)

5/18/2006 3:19 PM - CCNMatthews

[Enervest Diversified Income Trust Announces March 2006 Distribution](#)

5/18/2006 3:19 PM - CCNMatthews

[EnerVest Diversified Income Trust Announces Financial Results for the Year Ended December 31, 2005](#)

5/18/2006 3:19 PM - CCNMatthews

[BACK](#) | [CLOSE](#) | [TOP](#)

© 2006 Stockgroup Terms & Conditions. [Privacy Policy](#).

Intraday data provided by [Comstock](#), a division of Interactive Data Corp. and subject to [terms of use](#).

[TERMS OF USE](#) | [PRIVACY](#) | [GLOSSARY](#) | [HELP](#)

Copyright © iTrustResearch. All Rights Reserved.

Next Profile: [Symbol Lookup](#)

powered by
Stockgroup

CANADIAN OIL SANDS TRUST - COS.UN (TSX) \$33.50 ▼ -\$1.25 -3.60%

[PRINT THIS](#)
 [EMAIL THIS](#)

[Overview](#)

[Charts](#)

[News Releases](#)

[Company Profile](#)

[Financials](#)

Research Options :

Add COS.UN To :

[>> My Portfolio](#)

[>> My Watchlist](#)

Watchlist

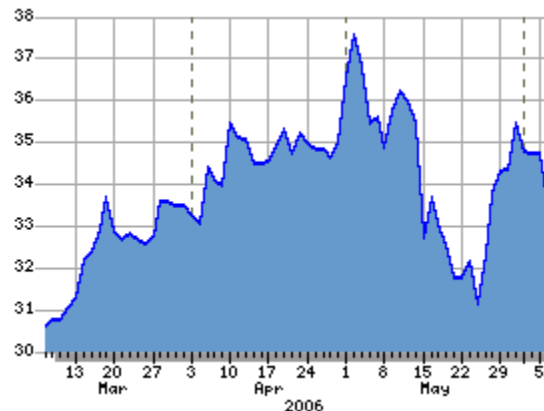
[Edit](#)

EIT.UN	\$7.16	EVEN
------------------------	--------	------

Company Profile



Open-ended investment trust that generates income from its 21.74% working interest in the Syncrude Joint Venture. It is the largest pure-play investment opportunity in the Alberta Oil Sands, a resource that rivals the oil reserves of Saudi Arabia.



Date Range: [Intraday](#) | [5 Day](#) | [15 Day](#) | [1 Month](#) | [3 Month](#) | [1 Year](#) | [2 Year](#) | [3 Year](#)

Address Information

Address:	2500 First Canadian Centre 350-7th Avenue SW Calgary, AB T2P 3N9
Telephone:	(403) 218-6200
Fax:	(403) 218-6201
Email:	investor_relations@cos-trust.com
Website:	http://www.cos-trust.com
CEO:	Marcel R. Coutu
Number of Employees:	9
Auditors:	PRICEWATERHOUSECOOPERS LLP

Last Auditors Report: Unqualified

Industry Information

CUSIP: 13642L100
Primary NAICS: 523990
Industry: FINANCIAL
Group Name: FINANCIAL SERVICES
Sub Group Name: Diversified Investments
SicCode: 7292

Stock Split Information

Date	Factor
5/1/2006	0.2

[BACK](#) | [CLOSE](#) | [TOP](#)

© 2006 Stockgroup Terms & Conditions. [Privacy Policy](#).

Intraday data provided by [Comstock](#), a division of Interactive Data Corp. and subject to [terms of use](#).

[TERMS OF USE](#) | [PRIVACY](#) | [GLOSSARY](#) | [HELP](#)

Copyright © iTrustResearch. All Rights Reserved.

Next Financials:



[Symbol Lookup](#)



CANADIAN OIL SANDS TRUST - COS.UN (TSX) \$33.50 ▼ -\$1.25 -3.60%

[PRINT THIS](#)

[EMAIL THIS](#)

[Overview](#)

[Charts](#)

[News Releases](#)

[Company Profile](#)

[Financials](#)

Research Options :

Add COS.UN To :

[>> My Portfolio](#)

[>> My Watchlist](#)

Watchlist

Edit

[EIT.UN](#)

\$7.16

[EVEN](#)

[Fundamentals](#) [Balance Sheet](#) [Cash Flow](#) [Income Statement](#) [Key Ratios](#) [Highlights](#)

Fundamentals

Earnings Announcements

Earnings Release 3/1/2006

Year End 12/1/2005

Dividend Information

0.80

Yield % 2.40

Payout Ratio (TTM)% 32.00

Financial Strength

Current Ratio (MRQ) 0.60

Quick Ratio (MRQ) 0.40

LT Debt/Equity (MRQ) 0.44

Total Debt/Equity (MRQ) 0.50

Valuation Ratios

Price/Earnings (TTM) 17.90

Price/Sales (TTM) 7.20

Price/Book (MRQ) 4.54

Price/Cash Flow (TTM) 14.40

Per Share Data

Earnings (TTM)\$ 1.87

Sales (TTM)\$ 4.65

Book Value (MRQ)\$ 7.38

Cash Flow (TTM)\$ 2.33

Cash (MRQ)\$ 0.08

Share Related Items

Market Cap (Mil) 15,544.00

Shares Outstanding (Mil) 464.00

Float (Mil) N/A

Management Effectiveness	
Return on Equity (TTM)	21.10
Return on Assests (TTM)	14.60
Return on Investment (TTM)	17.50
Profitability	
Gross Margin (TTM)%	75.40
Operating Margin (TTM)%	45.00
Profit Margin (TTM)%	36.30
Other	
Employees	9
Beta	N/A
(Mil) = Millions (TTM) = Trailing Twelve Months (MRQ) = Most Recent Quarter	

[BACK](#) | [CLOSE](#) | [TOP](#)

© 2006 Stockgroup Terms & Conditions. [Privacy Policy](#).

Intraday data provided by [Comstock](#), a division of Interactive Data Corp. and subject to [terms of use](#).

[TERMS OF USE](#) | [PRIVACY](#) | [GLOSSARY](#) | [HELP](#)

Copyright © iTrustResearch. All Rights Reserved.

Next Financials:



[Symbol Lookup](#)



CANADIAN OIL SANDS TRUST - COS.UN (TSX) \$33.50 ▼ -\$1.25 -3.60%

[PRINT THIS](#)

[EMAIL THIS](#)

[Overview](#)

[Charts](#)

[News Releases](#)

[Company Profile](#)

[Financials](#)

Research Options :

Add COS.UN To :

[>> My Portfolio](#)

[>> My Watchlist](#)

Watchlist

Edit

[EIT.UN](#)

\$7.16

[EVEN](#)

[Fundamentals](#) [Balance Sheet](#) [Cash Flow](#) [Income Statement](#) [Key Ratios](#) [Highlights](#)

Annual Cash Flow (CA Thousands)

[Switch to View Quarterly Reports](#)

Cash Flow from Operating Act.	12-2005	12-2004	12-2003	12-2002	12-2001
Net Income (Loss)	\$ 831,000	\$ 509,200	\$ 310,100	\$ 269,928	\$ 146,392
Depreciation & Amortization	200,700	175,000	95,600	0	0
Deferred Income Taxes	400	(27,300)	(2,200)	0	0
Operation (Gains) Losses	(27,300)	(81,100)	(130,700)	56,516	80,516
Extraordinary (Gains) Losses	0	0	0	0	0
Change in Working Capital:					
(Incr.) Decr. In Receivables	(51,100)	(29,500)	31,000	0	0
(Incr.) Decr. In Inventories	(30,000)	300	(14,600)	0	0
(Incr.) Decr. In Other Curr. Assets	500	1,700	(100)	0	0
(Decr.) Incr. In Payables	7,600	45,400	(67,300)	0	0
(Decr.) Incr. In Other Curr. Liabs.	0	0	0	0	0
Other Non-Cash Items	0	0	0	0	0
Net Cash from Cont. Oper.	949,000	593,700	221,800	355,765	245,510
Net Cash from Discont. Oper.	0	0	0	0	0
Net Cash from Operating Act.	\$ 949,000	\$ 593,700	\$ 221,800	\$ 355,765	\$ 245,510
Cash Flow from Investing Act.	12-2005	12-2004	12-2003	12-2002	12-2001
Cash flow Provided by:					
Sales of Prop., Plant, Equip	0	0	0	0	0
Sale of Short Term Invest.	0	0	0	0	0
Cash Used by:					

Purchase of Prop., Plant, Equip.	(799,600)	(942,100)	(2,260,800)	(403,203)	(179,514)
Purchase of Short Term Invest.	0	0	0	0	0
Other Investing Changes, Net	(21,300)	(22,900)	35,300	5,534	30,966
Net Cash from Investing Act.	\$ (820,900)	\$ (965,000)	\$ (2,225,500)	\$ (397,669)	\$ (148,548)
Cash Flow from Financing Act.	12-2005	12-2004	12-2003	12-2002	12-2001
Cash flow Provided by:					
Issuance of Debt	73,100	723,500	962,300	0	385,250
Issuance of Capital Stock	98,600	203,300	999,300	33,163	764
Cash Used for:					
Repayment of Debt	0	(371,900)	0	0	0
Repurchase of Capital Stock	0	0	0	(4,400)	0
Payment of Cash Dividends	(183,900)	(180,400)	(169,900)	(114,655)	(156,121)
Other Financing Charges, Net	(45,700)	(2,100)	(1,300)	453	(72,333)
Net Cash from Financing Act.	\$ (57,900)	\$ 372,400	\$ 1,790,400	\$ (85,439)	\$ 157,560
Effect of Exch. Rate Chg.	0	0	0	0	0
Net Chg. In Cash & Cash Equiv.	70,200	1,100	(213,300)	(127,343)	254,522
Cash at Beginning of Period	17,800	16,700	230,000	357,313	102,791
Free Cash Flow	(34,500)	(528,800)	(2,208,900)	(162,093)	(90,125)
					Next >>

[BACK](#) | [CLOSE](#) | [TOP](#)

© 2006 Stockgroup Terms & Conditions. [Privacy Policy](#).

Intraday data provided by [Comstock](#), a division of Interactive Data Corp. and subject to [terms of use](#).

[TERMS OF USE](#) | [PRIVACY](#) | [GLOSSARY](#) | [HELP](#)

Copyright © iTrustResearch. All Rights Reserved.

Next Financials:



[Symbol Lookup](#)

powered by
Stockgroup

MICROSOFT CORP - MSFT (NASDAQ) \$22.13 ▼ -\$0.37 -1.64%

[PRINT THIS](#)

[EMAIL THIS](#)

[Overview](#)

[Charts](#)

[News Releases](#)

[Company Profile](#)

[Financials](#)

Research Options :

Add MSFT To :

[>> My Portfolio](#)

[>> My Watchlist](#)

Watchlist

Edit

[EIT.UN](#)

\$7.16

[EVEN](#)

[Fundamentals](#) [Balance Sheet](#) [Cash Flow](#) [Income Statement](#) [Key Ratios](#) [Highlights](#)

Highlights (\$USD)

Financial Highlights (All data for latest 12 months)

Sales	42,639.00 Mil	Revenue/Share	4.18
Income	13,471.00 Mil	Earnings/Share	1.26
Net Profit Margin	31.60%	Book Value/Share	4.12
Return on Equity	32.00%	Dividend Rate	0.36
Debt/Equity Ratio	0.00	Payout Ratio	26.00%

Revenue - Quarterly Results (in millions)

	3/2006	3/2005	3/2004
1st Qtr	10,161	9,292	8,065
2nd Qtr	9,741	9,189	8,215
3rd Qtr	11,837	10,818	10,153
4th Qtr	10,900	9,620	9,175
Total	\$42,639	\$38,919	\$35,608

Earnings Per Share - Quarterly Results

	3/2006	3/2005	3/2004
1st Qtr	\$0.34	\$0.25	\$0.18
2nd Qtr	\$0.29	\$0.23	\$0.24
3rd Qtr	\$0.34	\$0.32	\$0.14
4th Qtr	\$0.29	\$0.23	\$0.12
Total	\$1.26	\$1.03	\$0.68

[BACK](#) | [CLOSE](#) | [TOP](#)